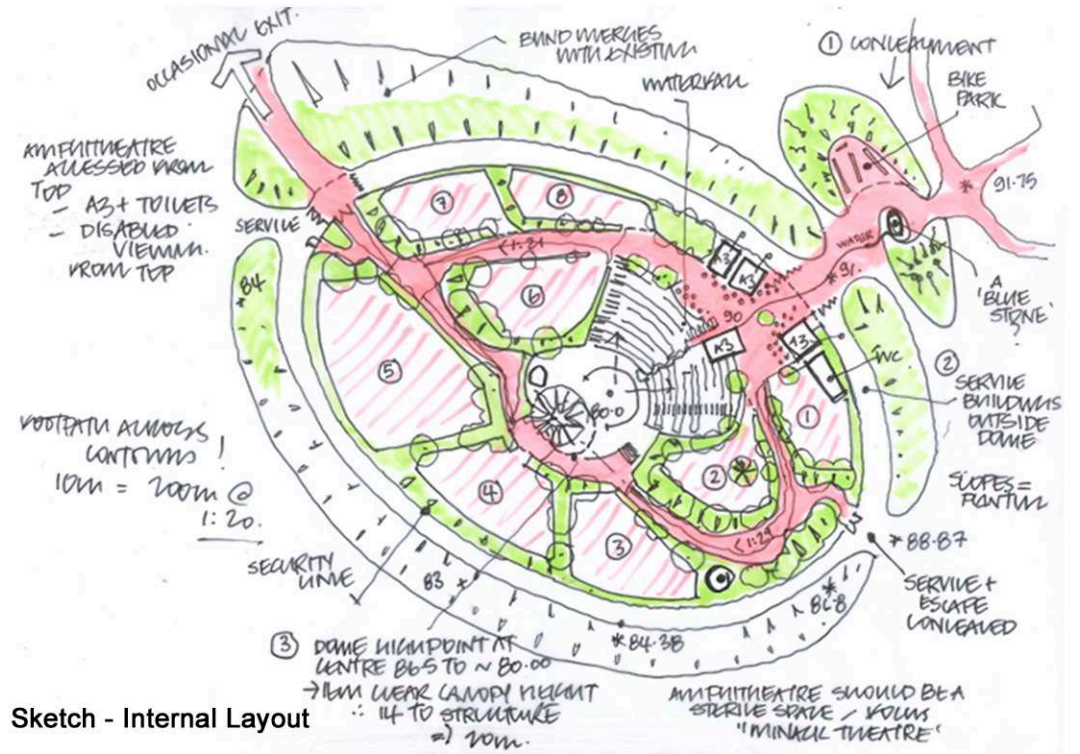




Site Location and Context



Sketch - Internal Layout



Main entrance



LANDSCAPED BUND CONCEALS SERVICE AREAS, DEFLECTS PREVAILING WIND + VISUALLY CONNECTS SKYDOME TO ITS LANDSCAPE

Concept Section

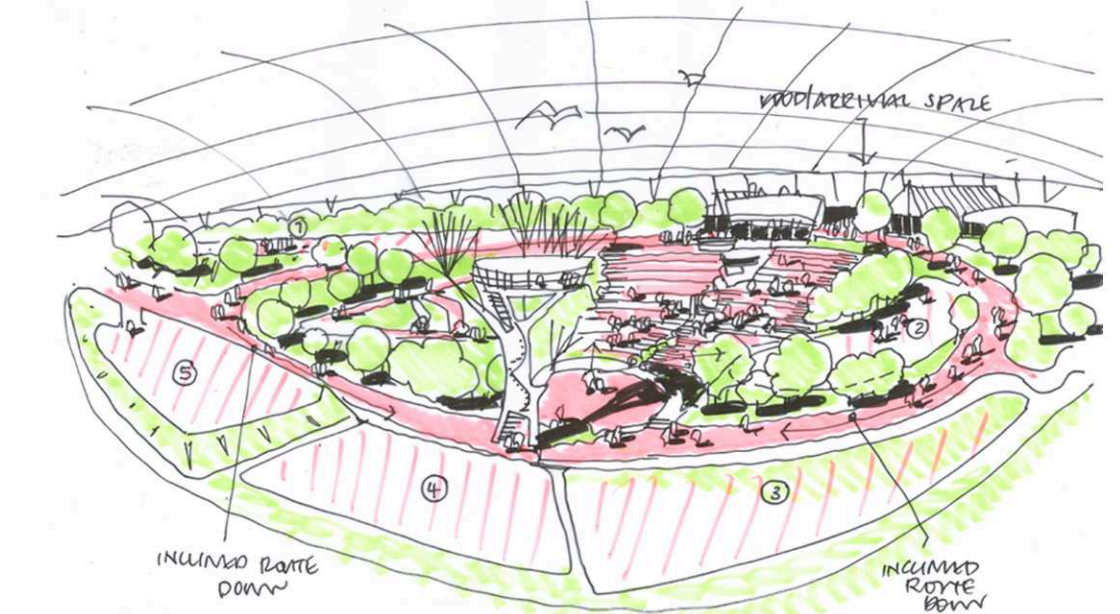
The brief was to create an all-weather covered play space for guests of the Bluestone resort. A lightweight structure was proposed, keeping the rain off and providing a clear minimum internal height that would facilitate a range of activities.

The required clear height has been achieved by keeping the canopy low and excavating the existing ground. A landscaped earth bund is proposed at the perimeter of the "dome". As a result, the proposal:

- is integrated within the existing landscape and contours
- has a low visual impact
- uses a small surface area of canopy, which leads to significant cost savings
- enables a considered use of construction materials.



Typical Internal view



3D Sketch - First Design Intention - Internal Layout



Internal view to Main Entrance

